

Contractor display

Bids from Contractors are recorded in the Contractor's own currency or can be loaded electronically when the Contractor quotes using Refman's Contractor Quotation Package.

Compare bids from contractors directly on the screen

Bids compared in your own base currency (can include your own contingency to allow for any exclusions) with the option to show/hide the original quotation in the Contractor's own currency

No.	Job Name	Yard	% Done	Discount	Costs	Bid+E/C (SGD)	Bid+E/C	Account Code	A/C/P Code
1	Passenger Cabin Bathrooms to Retile	✓		✓	All	121,635.00	92,851.15	DDG	
2	Passenger Cabin Dressing Tables to Refurbish	✓		✓	All	82,215.00	62,759.54	DDG	
3	Light Fittings to Spray Paint	✓		✓	All	1,687.00	1,287.79	DDG	
3.1	Light Fittings to paint incr'd by 50 off	✓		✓	All	1,350.00	1,030.53		
4	Cabins on A & F Decks Interiors to Paint	✓		✓	All	110,025.00	83,988.55	DDG	
4.1	50 off additional cabins to paint	✓		✓	All	27,000.00	20,610.69		
4.2	Bottle opener removed to 64 cabins holes to fill	✓		✓	All	3,645.00	2,782.44		
5	Promenade Deck Cabins to Paint and Vinyl	✓		✓	All	38,800.00	29,618.32	DDG	

Job Name	CR Us Inc Total (EUR)	CR Us Inc	CSI Total (SGD)	CSI	PAX Int. Total (USD)	PAX Int.
1 Passenger Cabin Bathrooms to Retile	90,100.00	111,234.57	121,635.00	92,851.15	112,625.00	112,625.00
2 Passenger Cabin Dressing Tables to Refurbish	60,900.00	75,185.19	82,215.00	62,759.54	76,125.00	76,125.00
3 Light Fittings to Spray Paint	1,250.00	1,543.21	1,687.50	1,288.17	1,562.50	1,562.50
		1,234.57	1,350.00	1,030.53	1,250.00	1,250.00
		100,817.28	110,025.00	83,988.55	101,875.00	101,875.00
		24,691.36	27,000.00	20,610.69	25,000.00	25,000.00
		3,333.33	3,645.00	2,782.44	3,375.00	3,375.00
		35,555.56	38,800.00	29,618.32	36,000.00	36,000.00
		1,728.40	1,890.00	1,442.75	1,750.00	1,750.00
		51,604.94	56,430.00	43,076.34	52,250.00	52,250.00
		39,506.17	43,200.00	32,977.10	40,000.00	40,000.00
		34,567.90	37,800.00	28,854.96	35,000.00	35,000.00
		38,271.60	41,850.00	31,946.56	38,750.00	38,750.00
		36,419.75	39,825.00	30,400.76	36,875.00	36,875.00
		1,851.85	2,025.00	1,545.80	1,875.00	1,875.00
		987.65	1,080.00	824.43	1,000.00	1,000.00
TOTAL	558,333.33	610,537.50	466,059.16	569,412.50	569,412.50	

Automatic contractor comparison

REFMAN generates a contractor bid comparison report, in your own base currency which can automatically highlight the 'most expensive', 'least expensive' quote, etc.

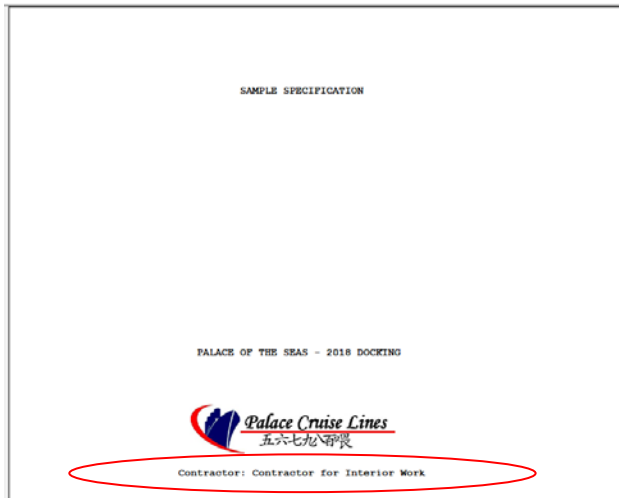
Overview

REFMAN's Contractor Comparison Module extends the facilities of the Cost Control Module to allow the loading/recording of bids/quotations from specialist Contractors so that these can be compared against one another and/or compared against quotations from Yards, on a job by job basis in a mix of currencies. Quotations from equipment/spare parts suppliers can also be compared in the same way if required.

The cost of owners arranged contractors will still be included in the specification as an estimated cost in your own base currency under your chosen Owner's Cost Category, exactly the same way as they were previously. However with the Contractor Comparison Module, these costs can be obtained directly from the Contractor's original bid/quotation without the need for a "one-off" manual conversion to your own base currency.

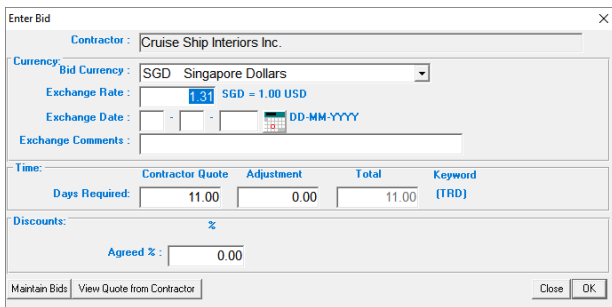
REFMAN – Contractor Comparison

The Superintendent or Port Engineer first generates a specification which contains only the jobs which a specialist Contractor is being asked to quote for.



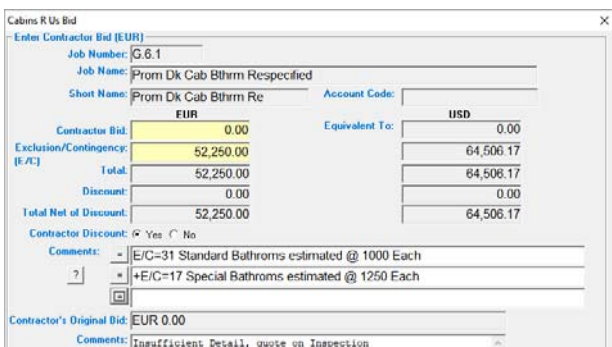
Specification for a particular type of specialist Contractor.

A Contractor Quotation Package can then be generated which contains both the specification (in PDF format) and a small program to allow the Contractor to enter their prices. This enables prices to be returned electronically and then loaded directly into the specification. Alternatively, the specification can be printed (output to PDF format with option to merge attached files built in) and sent to the Contractor, but in this case the prices you receive back would need to be entered manually.



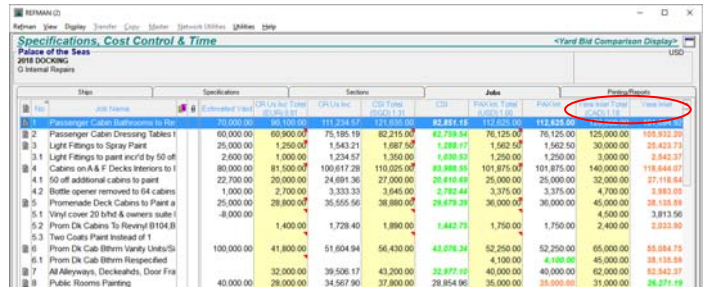
Each Contractor has their own exchange rate.

If the Contractor declines to bid for all or part of a job, then the received bid can be adjusted to allow for this by entering an exclusion/contingency so that bids can still be compared on a "like for like" basis.



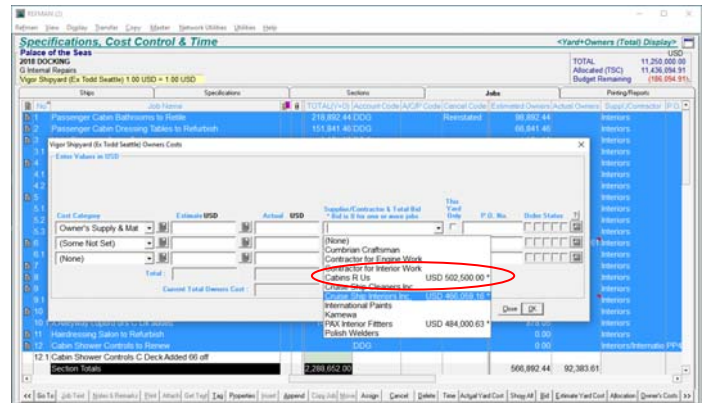
Formulas to calculate Exclusion/Contingency (also formulas for Bid and Unit Price available if required).

Once Bids for each Contractor have been loaded/entered, they can then be compared on screen.



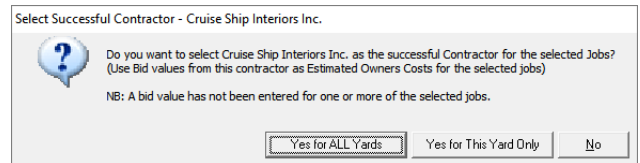
Compare Contractor Quotations against each other and/or against Yard Quotations if Contractors are quoting for the same work as Yards.

The "successful" Contractor is then set for the Job(s) they have been awarded under your preferred Owners Cost category, which then links the Estimated Owners Cost to that Contractor's original Quotation.



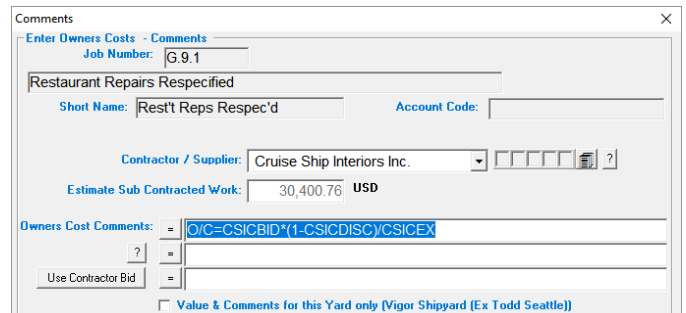
Contractor/Supplier list also shows total quotation for all the selected Jobs.

Contractor quotes can be linked to a particular yard so that they are only included as part of the costs for that particular yard, or they can be included regardless of which yard the ship eventually goes to (i.e. included for ALL Yards).



Setting the Successful Contractor for one Yard or for all Yards.

If the Contractor will do the work "instead" of the Yard, the program can automatically remove the Yard's Bid for these jobs. Alternatively, if the Contractor will do the work in conjunction with the Yard, the Contractor's bid will appear as an Owners Cost in addition to the Yard Cost.



Owners Cost is linked to Contractor bid using an editable formula which includes the Contractor's bid, discount (if quoted) and exchange rate.

System Requirements: As per REFMAN's Cost Control module.